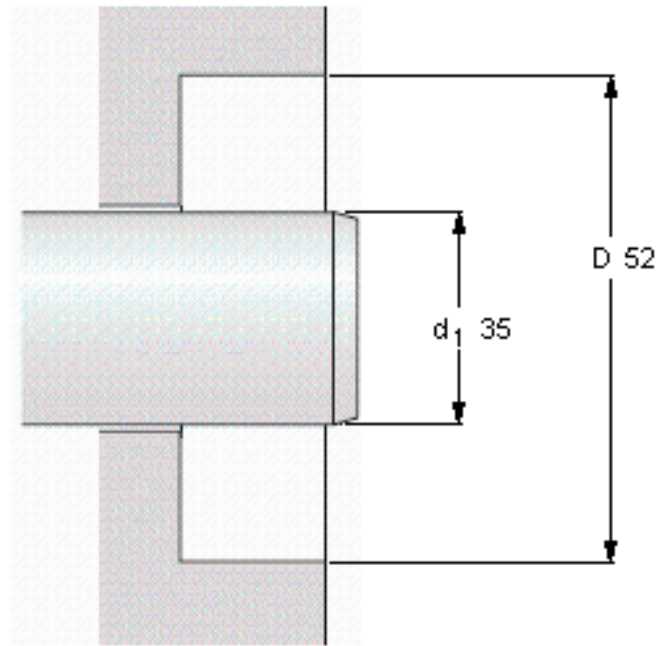
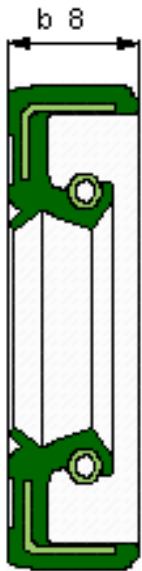


SKF 35x52x8 HMSA10 RG参数

| | | | | |
|-----------------------------------|---|-------------------------------|----|---|
| 主要尺寸 | d ₁ | 35 | mm | - |
| | d1 | 52 | mm | - |
| | b | 8 | mm | - |
| 设计 | 设计 | HMSA10 | - | - |
| 密封唇材料 | 密封唇材料 | RG | - | - |
| Pressuredifferential [MPa/psi] | Pressure differential [MPa / psi] | 0.03 | | - |
| 型号 | 型号 | 35x52x8 HMSA10 RG | - | - |
| 美国图纸编号 | 美国图纸编号 | 562974 | - | - |
| 注释 | 注释 | In accordance with ISO/DIN | - | - |

SKF 35x52x8 HMSA10 RG图片



Permissible operating temperature [°C / °F]

| | |
|-----------|---------------|
| 最小 | 最大 |
| -40 / -40 | 100 / 210 |
| | short periods |
| | 120 / 250 |

Rotational speed [r/min]

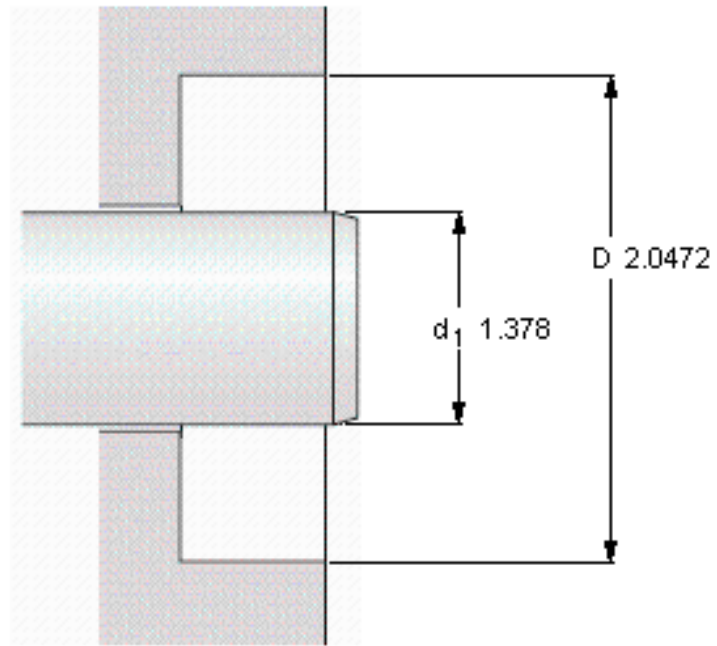
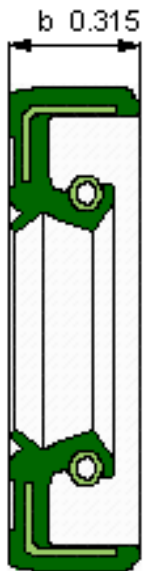
7639
at circumferential speed [m/s / ft/s]
 14 / 45,92

Pressure differential [MPa / psi]

0,03 / 5

See also "Permissible speeds" and "Chemical and thermal resistance"

参考资料:<http://www.sozhou.com/p/29746117.html>



Permissible operating temperature [°C / °F]

| | |
|-----------|---------------|
| 最小 | 最大 |
| -40 / -40 | 100 / 210 |
| | short periods |
| | 120 / 250 |

Rotational speed [r/min]

7639
at circumferential speed [m/s / ft/s]
 14 / 45,92

Pressure differential [MPa / psi]

0,03 / 5

See also "Permissible speeds" and "Chemical and thermal resistance"